

Post House delivers town homes with condo amenities to Boerum Hill



By **CityRealty Staff**
Today, March 28, 2023



In the midst of Brooklyn's residential building boom, [Post House](#) has attracted significant attention for its classically inspired architecture, well-thought interiors, extensive amenity package, and prime Boerum Hill location at 533 Pacific Street. The building was **63% sold** at the [beginning of March 2023](#), and a more recent check showed that it is now **76% sold** (all figures courtesy of [Marketproof](#)). A small handful of availabilities ranges from a one-bedroom for [\\$1.05 million](#) to a four-bedroom penthouse for [\\$4.65 million](#).

In concert with the multi-family building, Sterling Town Equities developed two new construction, ground up townhouses at **535 and 537 Pacific Street**. Both units offer 5,600 square feet of interior living space, private terraces on every floor, and all the space and privacy one can come to expect from a single-family home. But in the best of both worlds, residents enjoy access to the condo's amenities and services like garbage and snow removal that [townhouse owners](#) might not enjoy as much.

The townhouses' design by [Workshop/APD](#) presents an Art Deco-inspired tribute to the Post Office building that originally stood on the site and dated back to 1925. Residents are greeted by a red brick facade and a gated, arched entryway. Inside, features like arched entryways, chevron wood flooring, black metal detailing, and stacked tile nod to the building's history.

“We thought of it as Art Deco with a modern approach...Geometric shapes that suggest an envelope flap carry a ‘letters from home’ theme throughout the entire project” — Brook Quach, Design Director and Associate, Workshop/APD



Post House is in a central location allowing for easy access to [Downtown Brooklyn](#), [Park Slope](#), [Fort Greene](#), [Gowanus](#), and [Carroll Gardens](#). Indeed, the Atlantic Avenue/Barclays Center transportation hub one block away allows for easy access to practically anywhere in New York. Closer to home, cultural offerings include [Brooklyn Academy of Music](#), [Mark Morris Dance Group](#), Barclays Center, [Museum of Contemporary African Diasporan Art](#), and [The Center for Fiction](#). Big-box retailers Whole Foods, Target, and Apple have opened Brooklyn outposts nearby in recent years.

↓ **The townhouses' massive parlor floors feature 11-foot tray ceilings, cove lighting, chevron-patterned white oak flooring, gas fireplace, and archways framing the dining and living spaces.**



↓ **The chef's kitchens are flooded with light from south-facing windows and feature natural stone countertops, custom white oak cabinetry, and state-of-the-art appliances, including a wine fridge and a 48" range with fluted, vented hood.**



↓ All secondary bedrooms have en suite baths. The primary suite occupies a full floor and boasts its own terrace, a home office, a walk-in closet, and a windowed bath with custom vanities, radiant heated marble floors, Waterworks fixtures, huge shower room, and deep soaking tub.

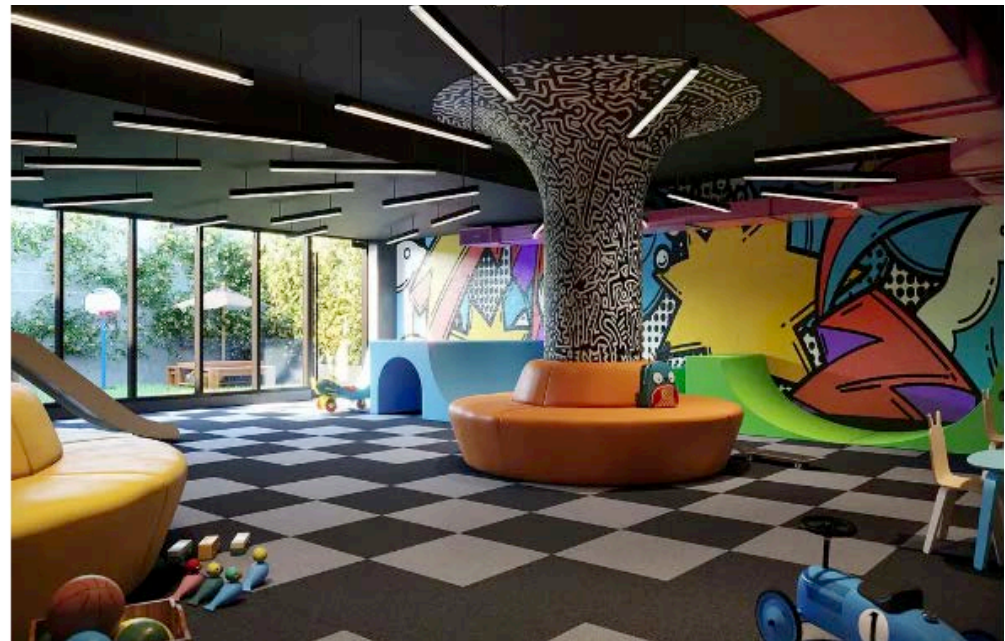
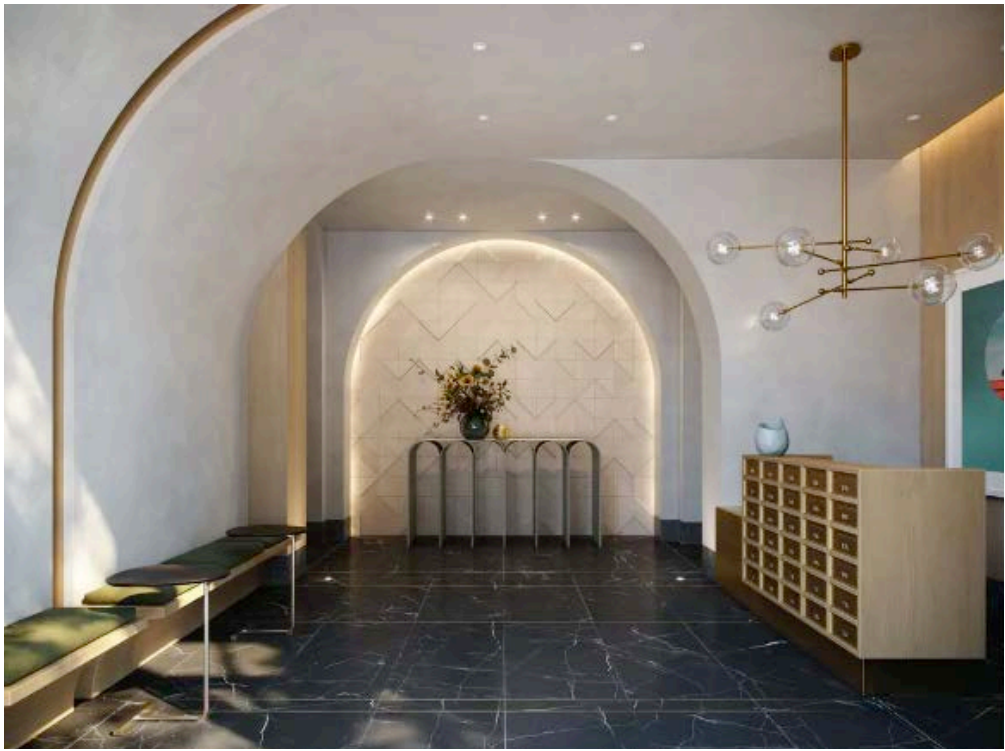


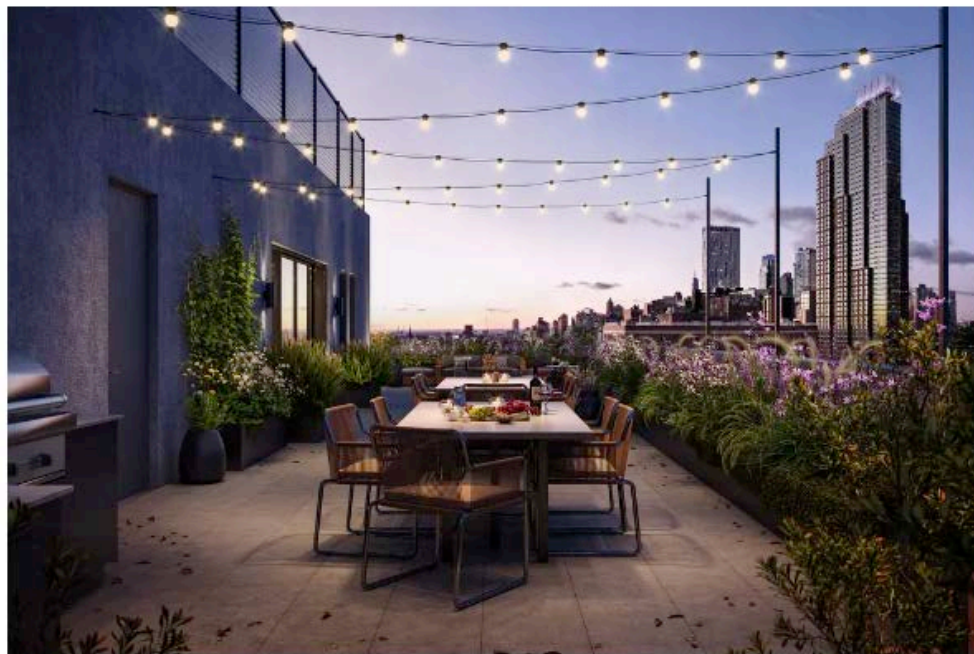
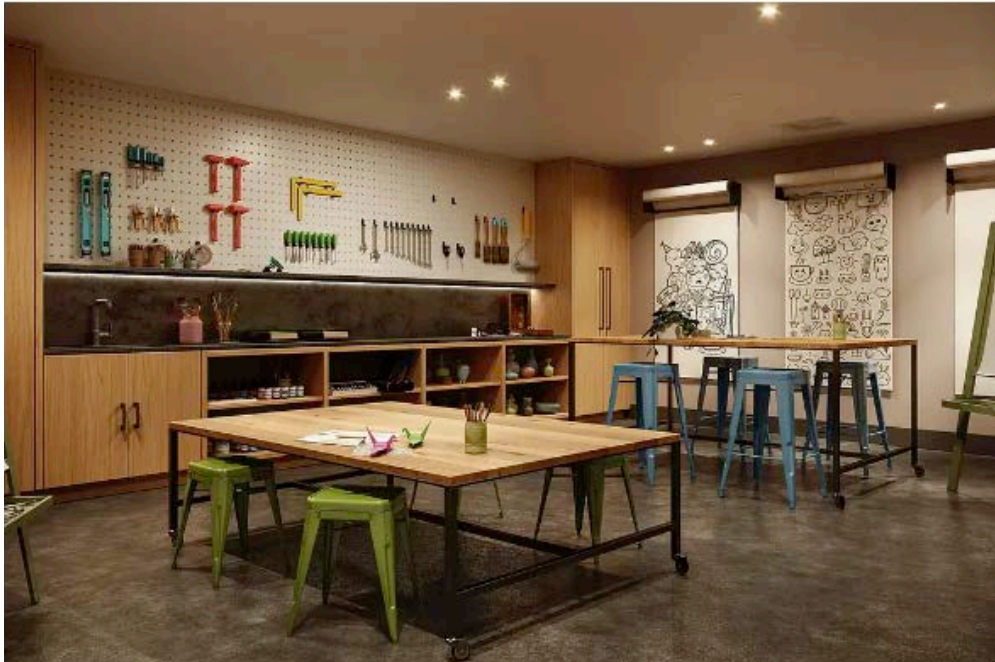
↓ There are terraces on every level, and the crowning glory is a private roof terrace.



↓ Additional features include private parking, private elevators, basement bonus rooms, and mezzanine-level guest suites.







The terraces off the townhouses' living rooms overlook Post House's landscaped courtyard.

Owners also enjoy access to amenities like:

- Rooftop terrace with dining, gathering, and fitness areas
- Children's playroom
- Artists' craft studio
- Fitness center with saunas and changing rooms
- Pet spa
- Bike storage
- Private storage for purchase